

OFFERS IN EXCESS OF

£525,000

Kenbury Street

London, SE5 9BU

**GARETH
JAMES**

PROPERTY SUMMARY

With natural light, high ceilings, period features and hard wood flooring throughout, this well-proportioned flat extends to approximately 805 sq ft and is positioned on the ground floor of an rare purpose built Edwardian mansion block. The property further benefits from its own private west-facing garden, offering an excellent outdoor extension to the living space.

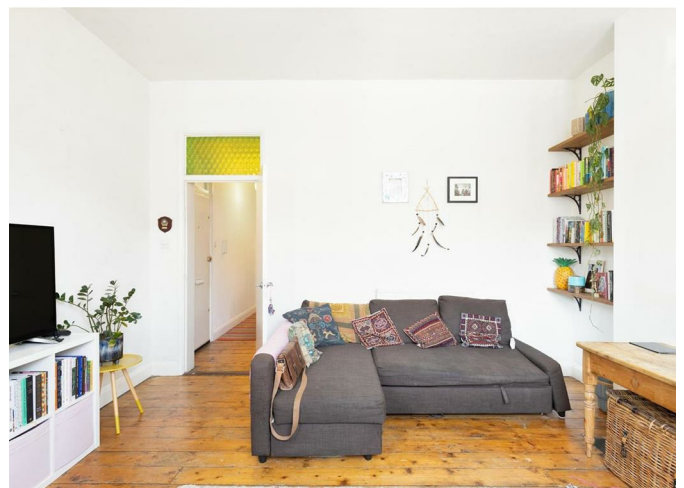
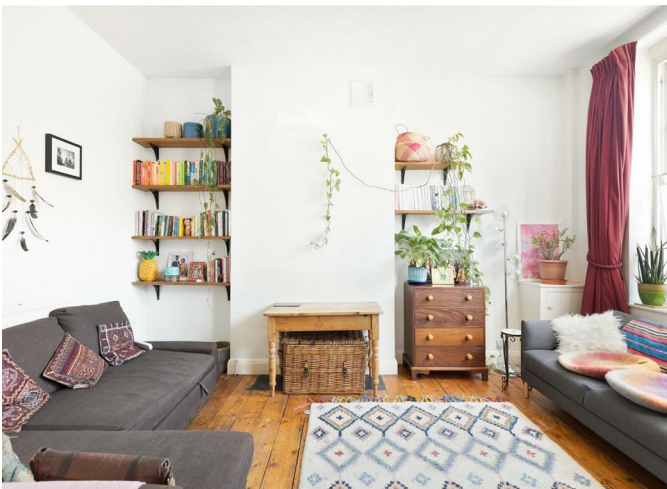
2



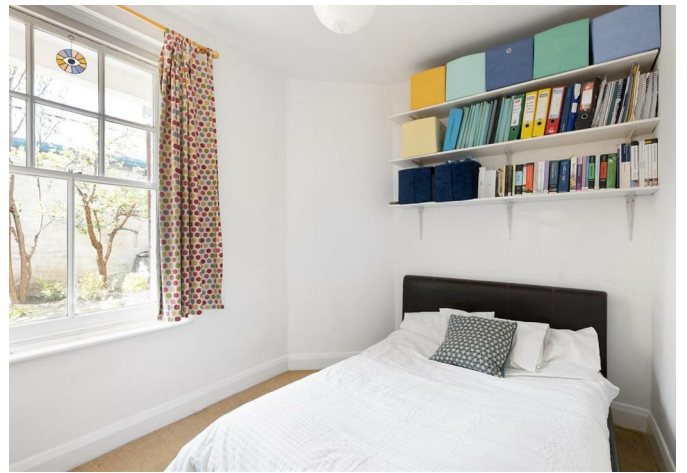
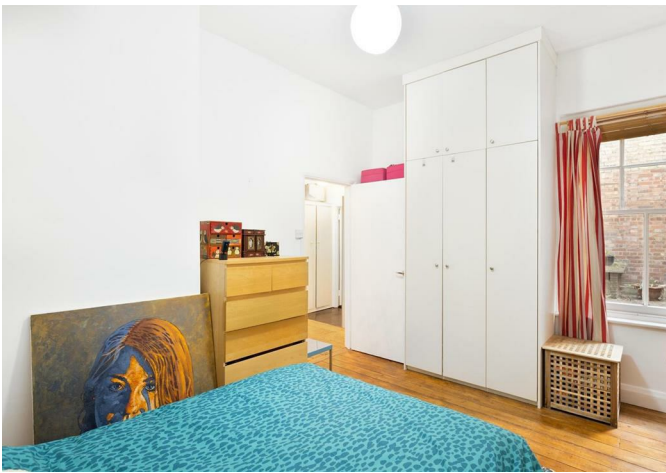
1



2







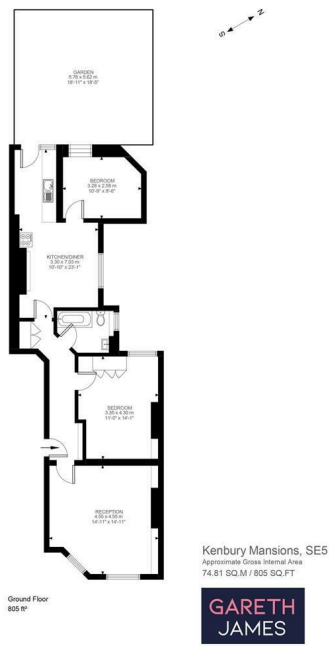
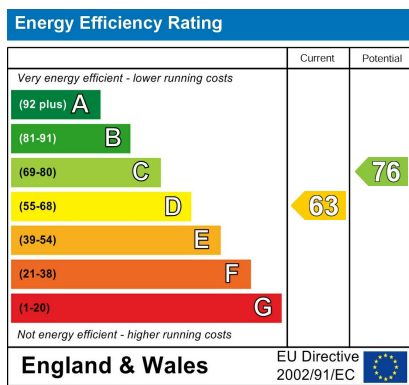


Illustration for identification purposes only. Not to scale. Floor Plan Drawn According To RICS Guidelines.

2 | 

1 | 

2 | 



Agents Note: Whilst every care has been taken to prepare these particulars, they are for guidance purposes only. All measurements are approximate and are for general guidance purposes only and whilst every care has been taken to ensure their accuracy, they should not be relied upon and potential buyers/tenants are advised to recheck the measurements

GARETH JAMES

OFFICE ADDRESS
129 Bellenden Road
London
SE15 4QY

OFFICE DETAILS
02077324330
sales@garethjames.com
<https://www.garethjames.com/>